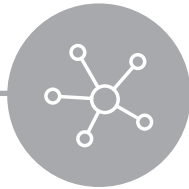
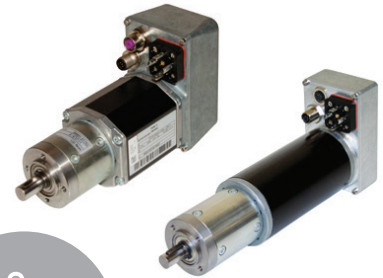


# NEED A REPLACEMENT FOR THE SIMODRIVE POSMO PRODUCT?



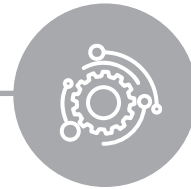
We've got the perfect solution that's 100% compatible – and it's even better!

The encoTRive series from TR Electronic is the perfect solution for existing and new applications. Our positioning drives are specifically designed to execute a wide variety of tasks. By bringing all necessary components together in integrated drive systems, the encoTRive gives you the control and efficiency you're looking for.



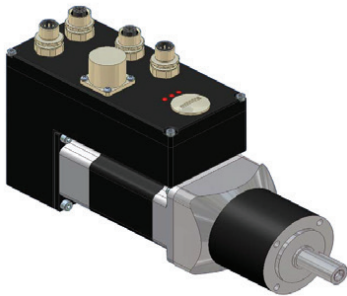
## Product selection benefits

- Functionally coordinated drive technology **from a single source** (electronic, mechanical and control engineering)
- Standardized series and application-specific modifications with a wide field of possible drive types, allowing for simple, specific adjustments for highly accurate and dynamic positioning tasks



## Application benefits

- Powerful automation of main and secondary axes using decentralized machine architectures
- Standardized control using common fieldbuses
- Reduced programming effort due to built-in positioning algorithms and freely-configurable telegrams



## Seamless replacement

The encoTRive MP and MA series are similar to the former SIMODRIVE POSMO product range from SIEMENS AG, which is no longer available. The POSMO A 75 W drive was discontinued by SIEMENS AG in 2017, without substitution or successor. Applications based on these products can be seamlessly continued – and expanded – using the TR-Electronic drives.

## Why you'll want the encoTRive

Because encoTRive uses the same gear series, the attachment is 100% mechanically compatible. Its reduced weight, more compact design and range of gearboxes combine to offer a wider variety of possible variations, including:

- brushless with 4 power levels (type outputs 60 - 180 W)
- 3 power levels with brush (type output 55 - 130 W)
- similar control structures based on the PROFIdrive V3.0 application profile with freely-configurable telegrams
- extensive optimization options for reduction gears and gearbox types

Need larger drives? We offer:

- MP-200
- MP-280
- MD-300

Profibus DP, Profinet IO, CANopen and EtherCAT, and an optional holding brake are also available for these drives.

*All drives are designed for positioning operation, and have a built-in absolute encoder with one-time homing for this purpose. Pure-speed operation is another option.*

## Need more information?

Call us, or send us an email and we'll help you get the **encoTRive** that best suits your needs.

1-800-265-9483

[www.trelectronic.com](http://www.trelectronic.com)

[customercare@trelectronic.com](mailto:customercare@trelectronic.com)